

Fabric Samples

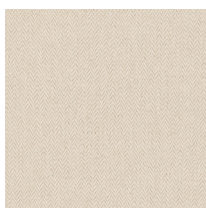
# Another Bed



# Romo

## Miro

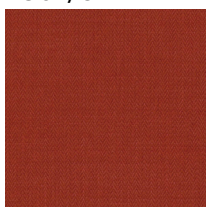
This distinguished herringbone weave adds a subtle charm to this exquisite cotton-linen union featuring the same irresistible soft, peach-skin finish that gives a unique, tactile quality. An expression of style and colour, Miro offers a comprehensive palette of 79 must-have shades, including trend driven tones of forest green, dusty pink, vintage teal and earthy hues, as well as classic neutrals. This beautiful plain has been considerably coloured, co-ordinating perfectly with new and existing Romo collections. Combining design and quality, Miro is the epitome of style, versatility and practicality. Suitable for both drapes and upholstery as well as being washable, Miro is a must-have addition to Romo's extensive library of plains and semi-plains.



Eucalyptus  
7867/37



Carbon  
7867/39



Chutney  
7867/68



Sage  
7867/55



Porridge  
7867/07

Composition: 58% Cotton, 42% Linen  
Abrasion: 35,000 Martindale Cycles

[Click on the swatches to see full collection.](#)

