

Fabric Samples

Day Bed Four



Kvadrat

Tonica 2

Designed by Georgina Wright, Tonica 2 is a woollen melange upholstery textile characterised by exceptional colour richness. It is comprised of three piece-dyed wool qualities. This allows for a greater variety of tones and an even more nuanced expression of colours.



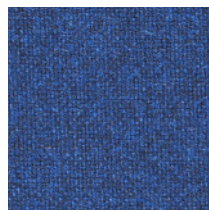
0111



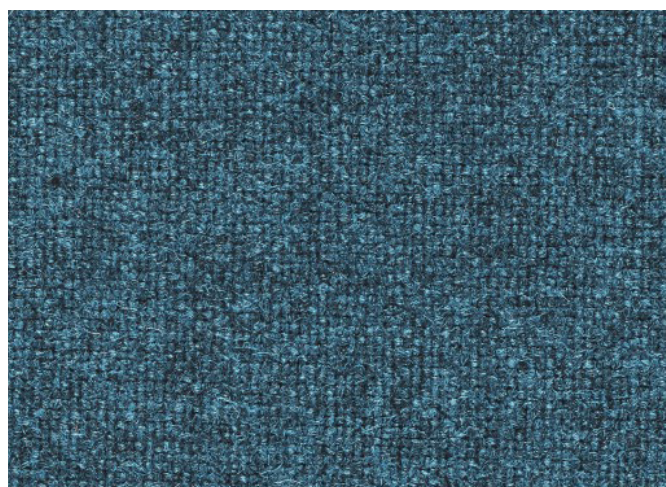
0171



0182



0732



0873

Composition: 100% Pure New Wool

Abrasion: 45,000 Martindale Cycles