

Fabric Samples

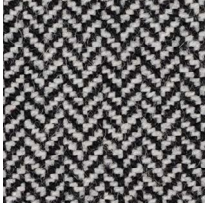
Day Bed One



Bute

Turnberry

Small scale chevron in a traditional worsted wool.



Herring
CF751/0102



Peat
CF751/0104



Puddle
CF751/0809

Composition: 92% Pure New Wool, 8% Nylon
Abrasion: 115,000 Martindale Cycles

[Click on the swatches to see full collection.](#)

