

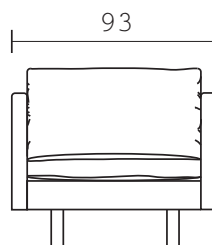
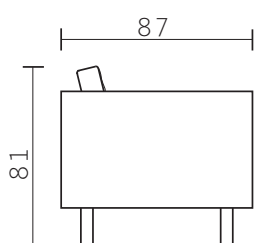


SL 88

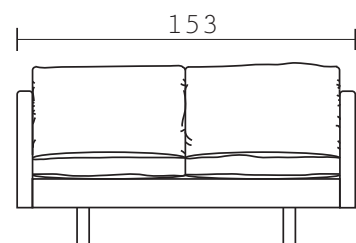
Søren Lund have been manufacturing high quality modern, upholstered furniture for over 50 years from their workshop in North Jutland. Classic, timeless Danish design, the SL 88 is one of of Søren Lund's most popular designs and is available in various sizes, fabrics and leg options.

Made in Denmark.

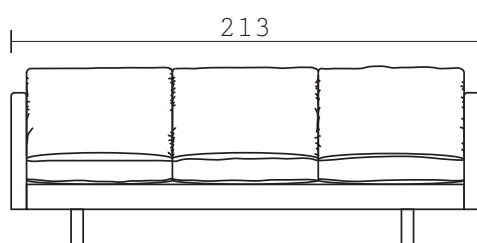
Height: 81 cm
Depth: 87 cm
Height of back cushions: 40 cm
Height of Seat: 43 cm
Depth of Seat: 58 cm
Height of Legs: 17 cm
Leg variants (model 88): white beech, cherry, mahogany, oak.
Leg diameter: 5.5 cm round



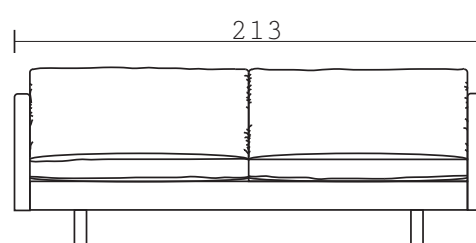
armchair



2 seater



3 seater with 3 cushions



3 seater with 2 cushions

Seat cushions composition

Primary cover made of 100 % cotton 180 g/m² flame retardant, designated Cambric 5824 BH, with filling of 60 % CMHR 27 kg/m³* 40 % duck feather.
Seat cushion filling: Polyurethane Foam.

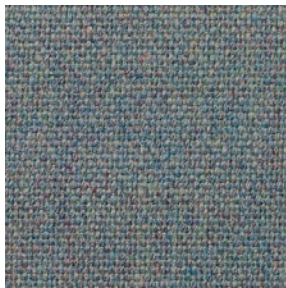
The sample tested meets the requirements of Schedule 1 Part 1 (Ignition test for polyurethane foam in slab or cushion form) of the Furniture and Furnishings (fire) (safety) Regulations 1988 (as amended). PASS.

Non-Upholstered

Fabric required 130 cm: armchair 5,8; 2 seater 8,8; 3 seater 10,8.

Category A

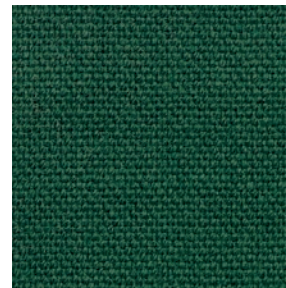
Camira Main Line Plus



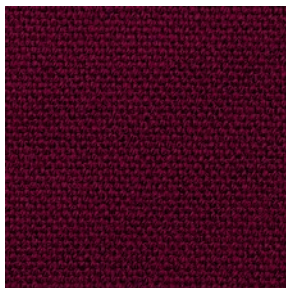
IF057 Prism



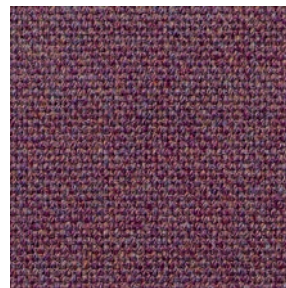
IF058 Lead



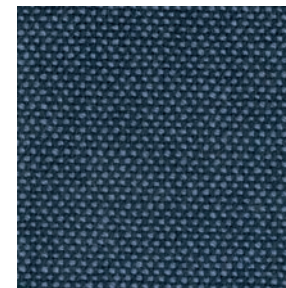
IF084 Juniper



IF101 Ruby



IF237 Tulip



IF241 Tuscany

Composition

67% Wool, 20% Flame Retardant Viscose 13% Viscose

Abrasion Resistance

5 year guarantee / 75,000 Martindale cycles (full details available)

Flammability

BS EN 1021 - 1:2014 (cigarette)

BS EN 1021 - 2:2014 (match)

BS 7176:2007 Low Hazard

BS 5852:2006 Section 4 Ignition Source 5 BS 7176:2007 Medium Hazard

Note: Flammability performance is dependent on foam used

Cleaning

Vacuum regularly. Professionally dry clean or wipe clean with a damp cloth.

Category B

Camira Main Line Flax



MFL22
Westminster



MLF02 Archway



MLF09 Monument



MLF16 Temple



MLF35 Brompton

Composition

70% Virgin Wool, 30% Flax

Abrasion Resistance

5 year guarantee / 50,000 Martindale cycles (full details available)

Flammability

BS EN 1021 - 1:2014 (cigarette)

BS EN 1021 - 2:2014 (match)

BS 7176:2007 Low Hazard

BS 5852:2006 Section 4 Ignition Source 5 BS 7176:2007 Medium Hazard

BS 5867-2: Type B

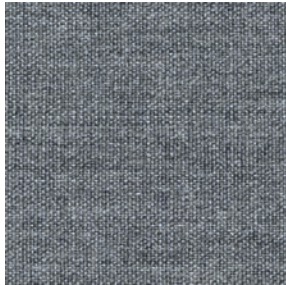
Note: Flammability performance is dependent on foam used.

Cleaning

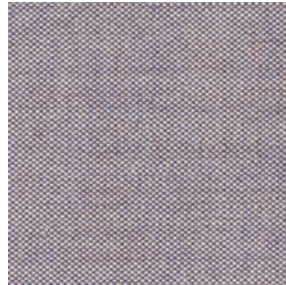
Vacuum regularly. Professionally dry clean or wipe clean with a damp cloth.

Category C

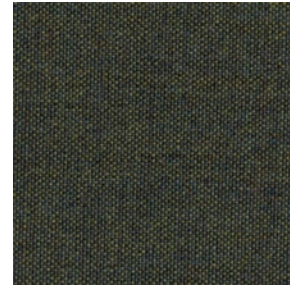
Kvadrat Remix 2



143 Grey



682 Lilac



842 Dark-green



852 Brown blue



933 Green

Composition:

90% new wool, 10% nylon

Abrasion

Approximately 100,000 Martindale rubs, EN ISO 12947

Flame resistance

EN 1021-1/2

BS 5852, ignition source 2-3

Önorm B1/Q1

NF D 60 013

UNI 9175, 1IM

AS/NZS 3837 class 2

Cal. Tech. Bull. 117, Sec. E

IMO A.652(16)

Crib 5 and B2 when flame protected No use of brominated flame retardants

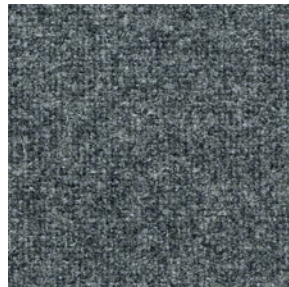
Cleaning: Vacuuming and dry cleaning Stain removal: See special guide

Category D

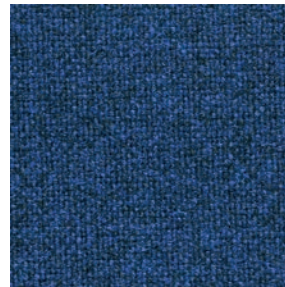
Kvadrat Tonica



111 Light Grey

171 Medium
grey

182 Dark grey



732 Navy

Composition:
100% new wool

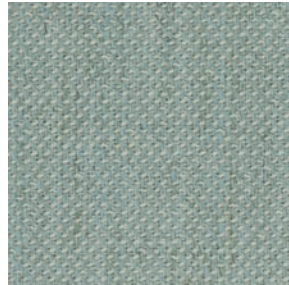
Abrasion
Approximately 45,000 Martindale rubs, EN ISO 12947

Flame resistance
EN 1021-1/2
BS 5852, ignition source 2-4 DIN 4102 B2
Önorm B1/Q1
UNI 9175/UNI 9176, 1IM
Cal. Tech. Bull. 117, Sec. E IMO A.652(16)

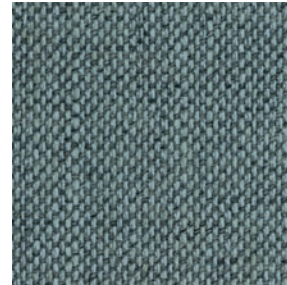
Cleaning: Vacuuming and dry cleaning Stain removal: See special guide

Category E - 1 of 2

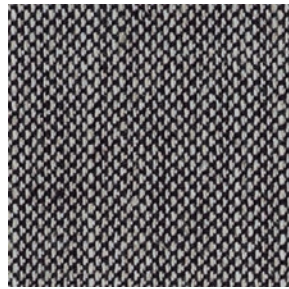
Kvadrat Sunniva 2



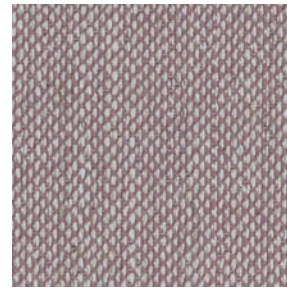
132 Mint green



152 Mid grey



352 Wine red



632 Pink

Composition:

58% New wool, 25% Viscose, 8% Linen, 4% Polyester, 5% Polyamide

Abrasion

50.000 Martindale

Flame resistance

AS/NZS 3837

DIN 4102 B2

EN 1021-1/2

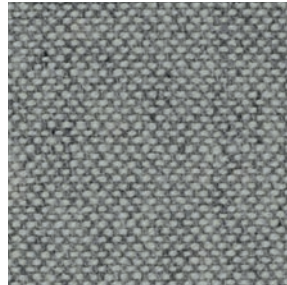
IMO A.652(16) with FR treatment

US CAL. BULL. 117-2013

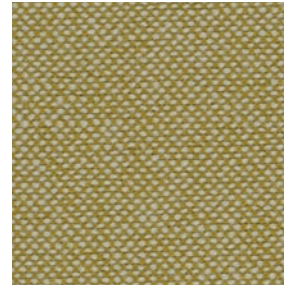
Cleaning: Dry cleaning

Category E - 2 of 2

Hallinghdal 65



116 Light grey



407 Sunflower



180 Charcoal



674 Ruby red

Composition:

70% New wool, 30% Viscose

Abrasion

100.000 Martindale

Flame resistance

AS/NZS 1530.3

AS/NZS 3837

BS 5852 Crib 5

BS 5852 part 1

DIN 4102 B2

EN 1021-1/2

IMO A.652(16)

NF D 60 013

NFPA 260

SN 198 898 5.3 with FR treatment

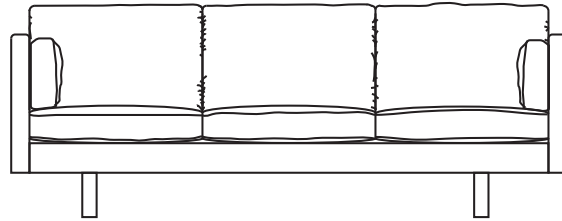
UNI 9175 11M

US CAL. BULL. 117-2013

Cleaning: Dry cleaning



Arm cushion: Rom (square)



Arm cushion: Pisa (bolster)

