

Fabric Samples

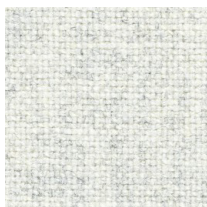
Series Four



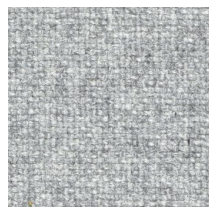
Day Bed Four

Kvadrat - Tonica 2

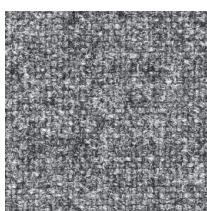
Designed by Georgina Wright, Tonica 2 is a woollen melange upholstery textile characterised by exceptional colour richness. It is comprised of three piece-dyed wool qualities. This allows for a greater variety of tones and an even more nuanced expression of colours.



0111



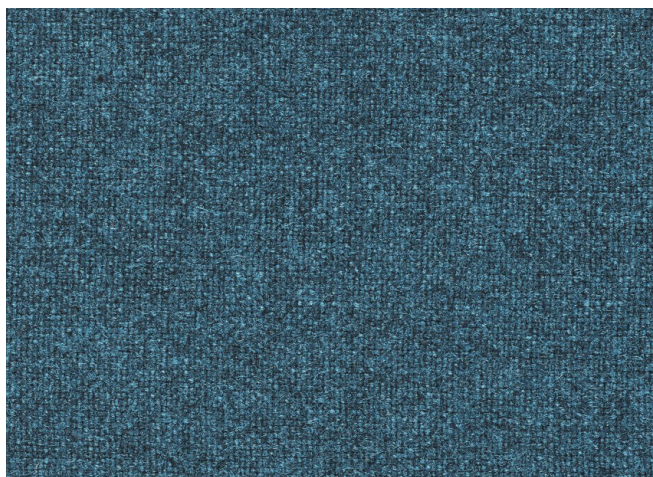
0171



0182



0732



0873

Composition: 100% New Pure Wool
Abrasion: 45,000 Martindale Cycles

[Click on the swatches to see full collection.](#)

